

Daily and Long-Term Improvements

By Aynsley Dueck, Operations Manager





About Us

Family Owned and Operated Manufacturing Business



The Quest... Continued



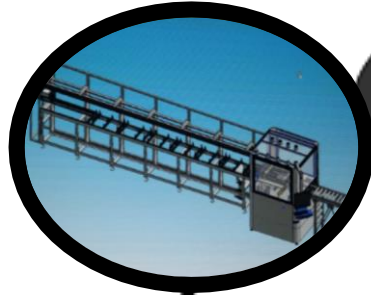
Al



Aynsley

Road Map

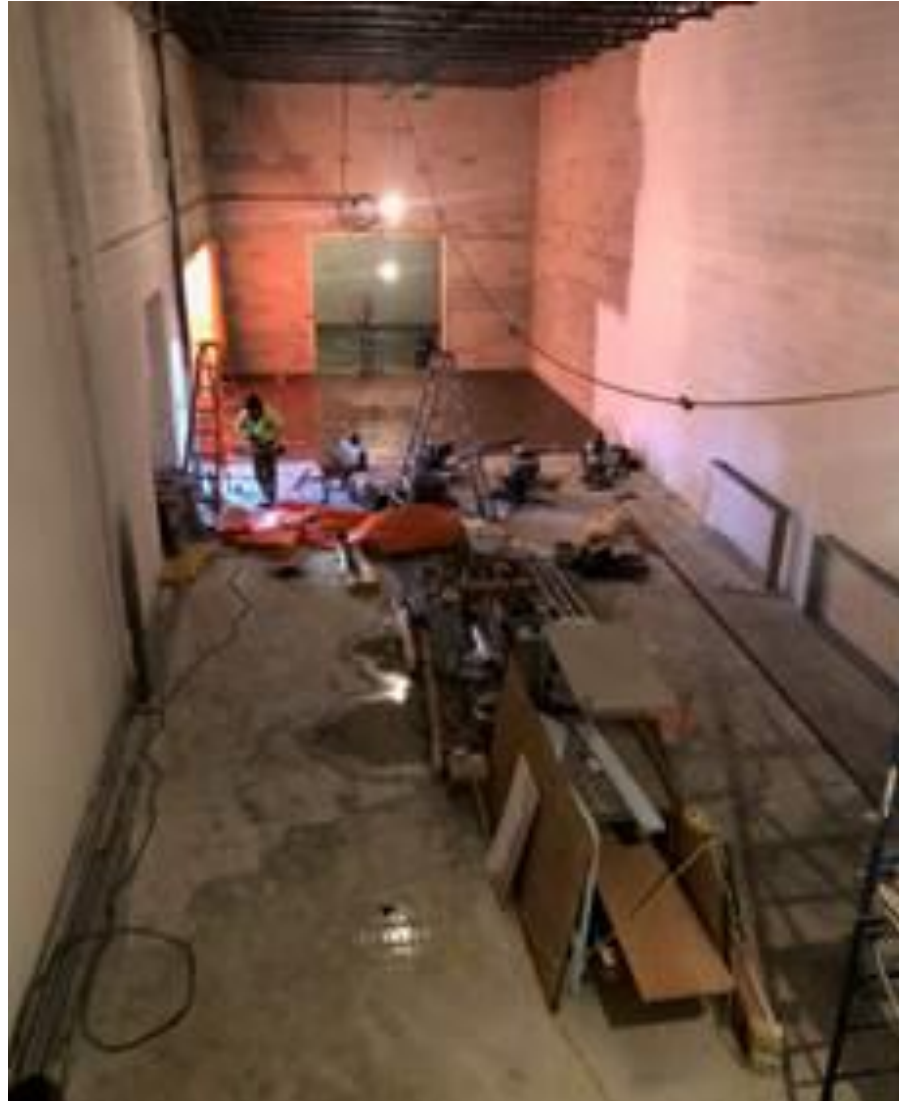
Where have we been?



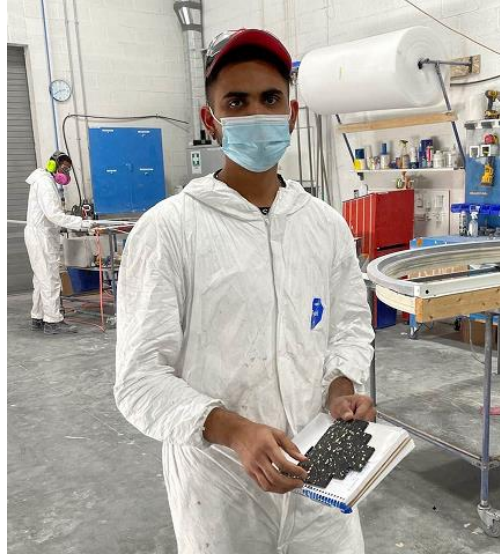
Pre-Covid Times for Town Hall



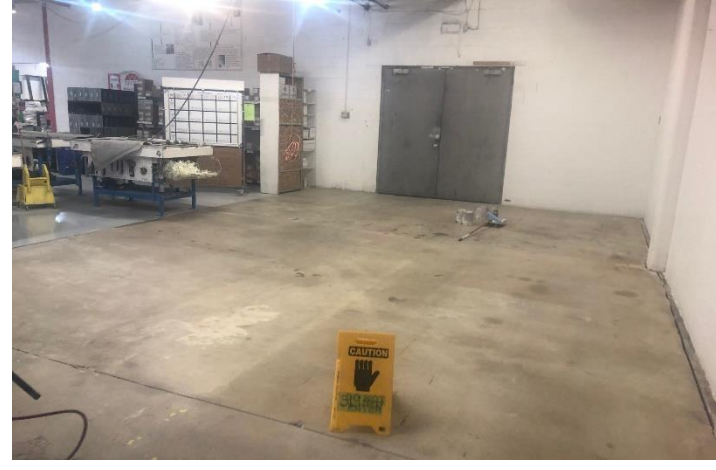
Expansion Underway



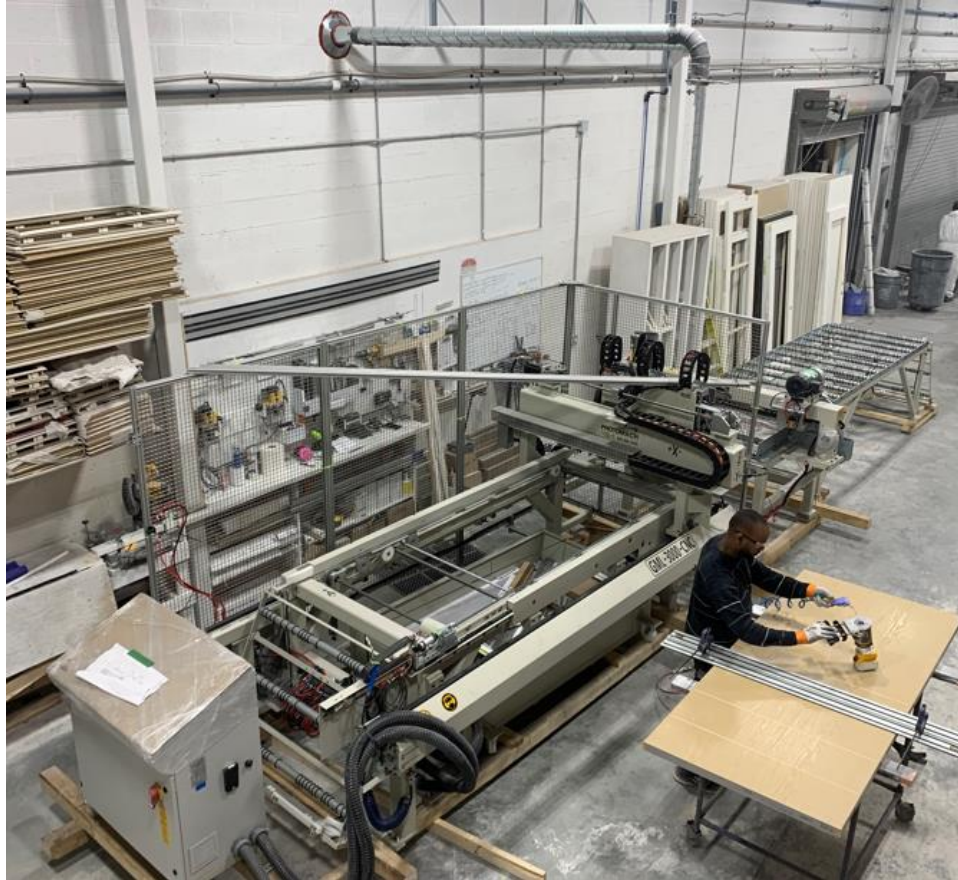
Paint Department



New Door Line



Automation Update



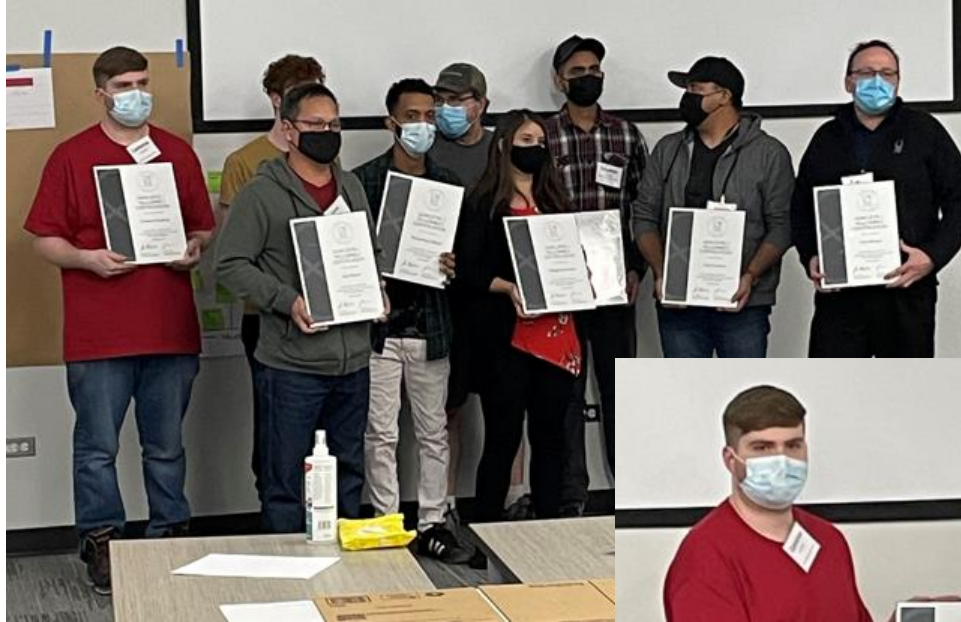
Lean 101 Refresher



Trickle-Down of Training



Yellow Belt Graduations



Kaizen Blitz in Specialty



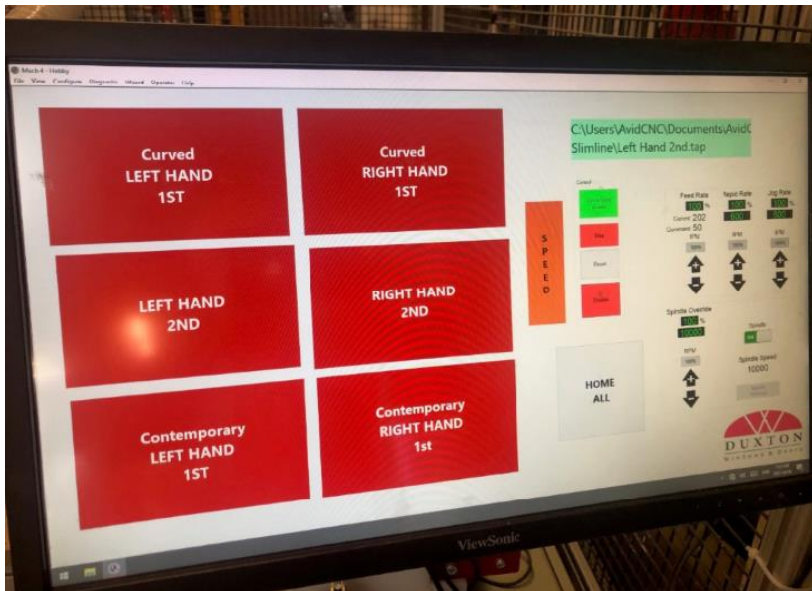
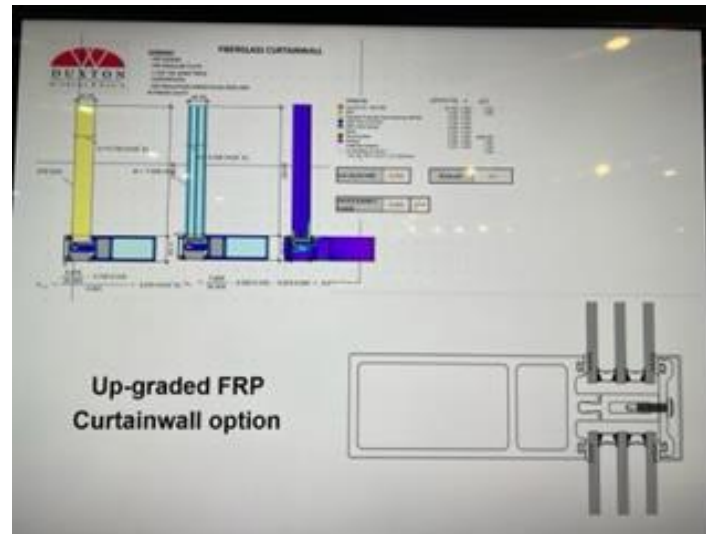
Self-Motivation



Visual Systems



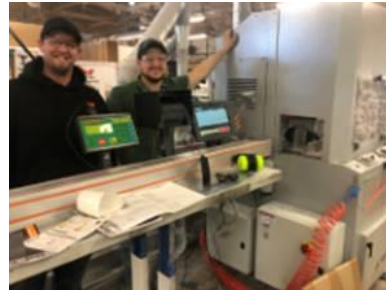
In-House Engineering



Maintenance Department



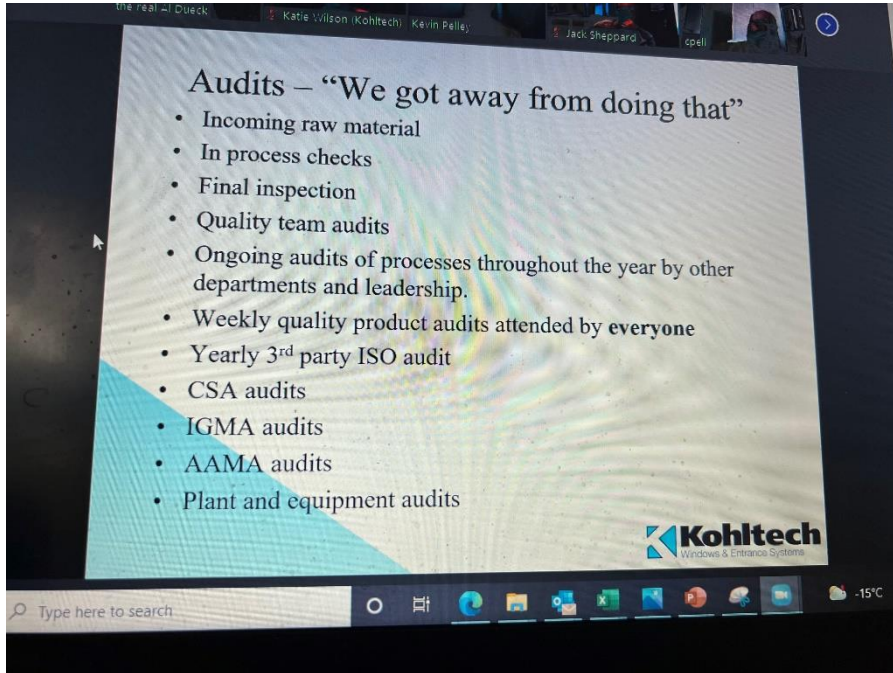
Product Development



Quality Control Updates



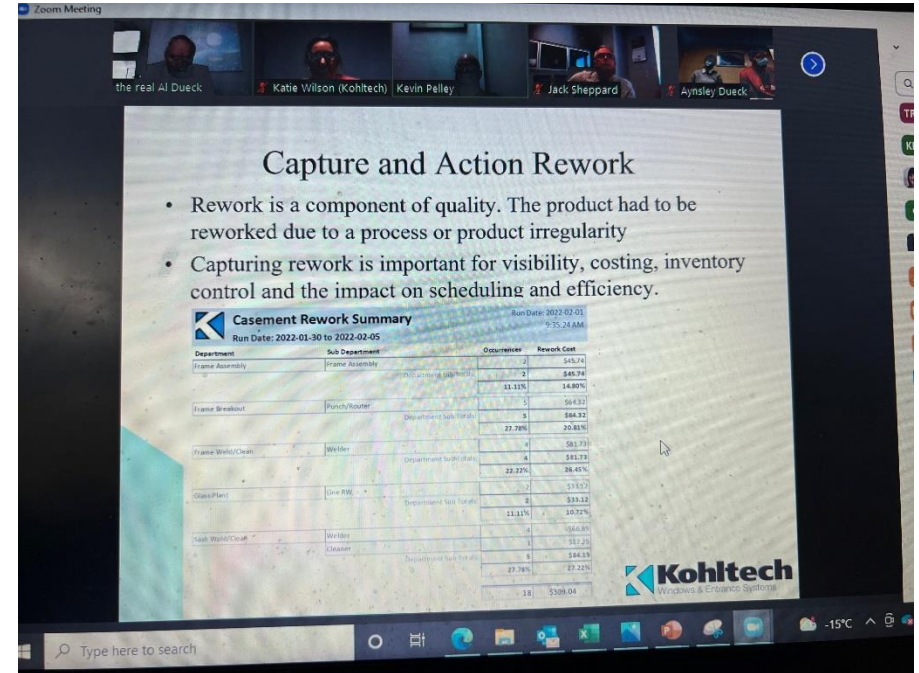
Quality Control – Industry Teamwork



Audits – “We got away from doing that”

- Incoming raw material
- In process checks
- Final inspection
- Quality team audits
- Ongoing audits of processes throughout the year by other departments and leadership.
- Weekly quality product audits attended by **everyone**
- Yearly 3rd party ISO audit
- CSA audits
- IGMA audits
- AAMA audits
- Plant and equipment audits

Kohltech
Windows & Entrance Systems



Capture and Action Rework

- Rework is a component of quality. The product had to be reworked due to a process or product irregularity
- Capturing rework is important for visibility, costing, inventory control and the impact on scheduling and efficiency.

Casement Rework Summary

Run Date: 2022-02-01 9:35:24 AM
Run Date: 2022-01-30 to 2022-02-05

Department	Sub-Department	Occurrences	Rework Cost
Frame Assembly	Frame Assembly	2	\$45.74
	Window Assembly	2	\$49.74
		11.11%	14.89%
Frame Breakout	Punch/Router	3	\$94.32
	Department Task Totals	5	\$94.32
		27.78%	20.88%
Frame Weld/Clean	Welder	4	\$81.73
	Department Sub-Totals	4	\$81.73
		22.22%	28.45%
Glass/Panel	Line PM	2	\$33.17
	Department Task Totals	2	\$33.17
		11.11%	10.22%
Task Weld/Clean	Welder	4	\$66.87
	Cleaner	4	\$52.25
		5	\$44.19
		27.78%	27.22%
		10	\$369.04

Kohltech
Windows & Entrance Systems




Change is Constant

- Our most important process
- **Nothing**, absolutely nothing, is changed without a manufacturing change request.
- Manufacturing change triggers inventory, sales and marketing, training, testing, etc. discussions.

Kohltech
Windows & Entrance Systems

Basics Improvements



Future Opportunity



Keys to Success on a C.I. Journey

- ✓ Invest in your team's success through training
- ✓ Give them time for their projects
- ✓ Share, share, share, then celebrate
- ✓ If you're not moving forwards you are moving backwards
- ✓ Reinvest through automation



Thank You

Questions?

Focus on your people and the success will follow.